

N.W. 1/4 OF SEC. 17, T.6N., R.2E., S.L.B. & M.

IN WEBER COUNTY
SCALE 1" = 200'

TAXING UNIT: 318

SEE PAGE 10

S.E. 1/4 SEC. 7
SEE P. 7

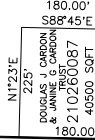
S.W. COR.
SEC. 8

SEE BOOK 24 P. 20

SEC. 18
10.7 CH (706.20')

SEE 210070001

19.09 AC±



THE DOUGLAS J CARDON &
JANINE G CARDON TRUST

210260054

21.70 AC±

THE DOUGLAS J CARDON &
JANINE G CARDON TRUST

210260053

11.3 AC±

THE MIDDLE FIELD, LC

210260040

15.74 AC±

LOWE PROPERTIES, LC

210260042

11.66 AC±

HALVOR ROOSEVELT BAILEY
ETAL, TRUSTEES

210260045

7.93 AC±

BAILEY'S BACK FIVE
SEE PAGE 99

210260046
SEE P. 26-1

E LEON FIELDING
& DOROTHY U
FIELDING, TRUSTEES

210260043

1.23 AC±

E LEON FIELDING &
DOROTHY FIELDING

210260044

3.85 AC±

210260047
SEE P. 26-1

28.72 CH

RAY S WALKER
& DEYONNE A
WALKER TR

210260051

4.07 AC±

210260049
SEE P. 26-1

28.72 CH

ERIC FIELDS & Wf
KAREN OLSON-FIELDS

210260048

1.85 AC±

GRANT H STORY
& BEVERLY J STORY, TR

210260069

3.50 AC±

210260050
SEE P. 26

28.72 CH

T ALLEN HARON
& JENNIFER HARON

210260074

1.00 AC±

E LEON FIELDING &
DOROTHY FIELDING, TR

210260067

4.50 AC±

SEE 210260009

SEE PAGE 26-1